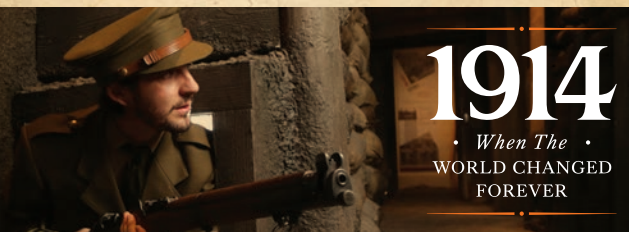


YORK CASTLE PRISON

The museum buildings were once a Georgian prison, and down in the felons' cells lies a dark and brutal history – a time of rogues, thieves and murderers.

Visit our infamous residents and shiver at their stories of rough conditions, crooked justice and harsh punishments. And watch out for our most notorious inmate of all – the legendary highwayman, Dick Turpin!



1914: When the World Changed Forever takes you from the recruiting office to the horrors of the front line through the objects and stories of those who experienced the First World War.

COMMUNITY ROOM EXHIBITIONS

See fascinating new displays by local groups, relating to the First World War

Find out more at www.yorkcastlemuseum.org.uk

Funding raised by
The National Lottery



LOTTERY FUNDED

TOY STORIES

Whether you're seven or 70, you'll find your best-loved childhood toys here... and your parents' and grandparents' favourites too.

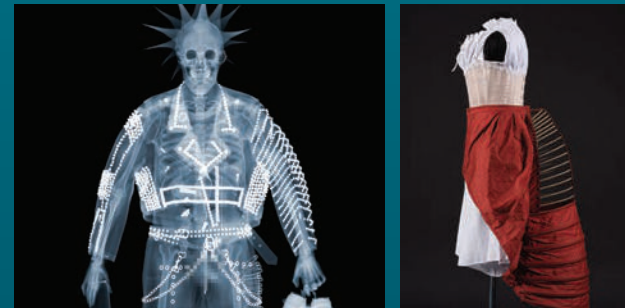
Share your memories of dolls and Lego, see our 100 year-old carousel and have a go at Pong. Follow the teddy bear trail to solve a puzzle or play together in our fun castle-inspired play area.

THE SIXTIES

Take a trip back to the decade that transformed our lives and attitudes with our colourful interactive gallery.

Remember Beatlemania, squeeze into the Mercury space capsule and see how new inventions and ideas transformed everyday life.

From flamboyant fashions and revolutionary music to space-age technology, things would never be the same again.



SHAPING THE BODY

400 YEARS OF FASHION, FOOD & LIFE

SPECIAL EXHIBITION

From 18th century bum rolls, through to the Victorian hour glass figure, the punks of the Seventies and the perms of the Eighties, see how our bodies have been shaped and designed through the choices we make and the consequences of our lifestyles.

Meet the people who have pushed their bodies to the limits to gain the look they crave and find out about dangerous fashions such as the women who wore extra tight corsets, high heels and even poisonous dresses!

Department for Culture Media & Sport

THE WOLFSON FOUNDATION

DCMS/Wolfson Museums & Galleries Improvement Fund

Shaping the Body Image: © Prior Attire & Timelight Photographic

Visitor Information

OPENING TIMES

Open Daily: 9.30am – 5pm

Closed 25, 26 Dec and 1 Jan. Early closing 24 and 31 Dec, see website for details.

ADMISSION

YMT Card Holder	FREE
Adult (with 10% Gift Aid Donation)	£10.00
Adult (without donation)	£9.09
Child (16 and under)	FREE with a paying adult
Access Day Ticket	£5.00

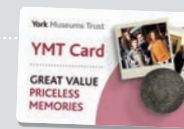
ARE YOU A YORK RESIDENT?

Valid York cardholders each receive **20% discount** on admission!

YMT Card

12 months unlimited access to
York Castle Museum, York Art Gallery
and the **Yorkshire Museum**.

YMT Card	£22 / £20 with Direct Debit
York Residents ***	£11 / £10 with Direct Debit
Access YMT Card **	£11 / £10 with Direct Debit
York Residents ***	FREE subject to availability



HOW TO FIND US

York Castle Museum is opposite Clifford's Tower. Follow the green pedestrian signs to Castle Area.

York Castle Museum, Castle Area, Eye of York, York YO1 9RY
T: 01904 687687 E: castle.museum@ymt.org.uk

f Find us on Facebook
York Castle Museum

Follow us on Twitter
@YorkCastle

Café Enjoy stunning views of Clifford's Tower. The perfect stop-off point on your visit for full meals or light snacks.

Pushchairs Pushchairs cannot be taken into galleries. A 'buggy park' and a choice of baby carriers are available free of charge.

Access The museum is accessible to wheelchair users except for the upper floors of the historic buildings. For further details, please phone or visit the website. Some areas may also be difficult for people with visual impairment. Please note our 1914 galleries are fully wheelchair accessible.

Shop A great selection of gifts, books, and souvenirs for all ages, including First World War, Sixties and fashion-themed items.

www.yorkcastlemuseum.org.uk



Supported using public funding by
ARTS COUNCIL ENGLAND



* Kids go FREE – children 16 and under go free with a paying adult; maximum 4 children per adult. Offer does not apply to organised groups.

** Access Tickets: available to 17-24 year olds and those on most forms of benefit. Terms and conditions apply, for more information see www.yorkcastlemuseum.org.uk.

*** With a valid YorkCard, current council tax bill or valid student ID.

York Castle Museum is part of York Museums Trust. Charity number 1092466. Information correct at time of going to print. Photography by Guzelian, Anthony Chappel-Ross, David Harrison, Dan Prince and Mike Cowling.

York Castle Museum

THE BEST DAY OUT IN HISTORY

Kids Go FREE



NEW FOR 2017 *Chocolate* YORK'S SWEET PAST



Delve into the delicious history of chocolate and sweets



York Museums Trust



“A PLACE OF MIRACLES AND WONDERS”

Kate Atkinson, best-selling author

Visit our exciting NEW chocolate experience!



See history come to life at the award-winning York **Castle Museum**

Wander through the cobbled streets of **VICTORIAN YORK**, venture into the prison cells at **YORK CASTLE PRISON**, discover the stories of the **FIRST WORLD WAR** and explore **BODY SHAPE THROUGH THE AGES** with bustles, bum rolls, corsets and more.

NEW FOR 2017

Journey through York's sweet past in our **NEW CHOCOLATE EXPERIENCE**.

TRAVEL BACK IN TIME...

Take a journey of discovery to our world-famous recreated Victorian street, Kirkgate.

Soak up the sights, sounds, and smells of Victorian York as you explore its cobbled streets and alleyways. Visit shops packed with fascinating objects – from luxurious costumes to traditional sweets and the pharmacist's unlikely 'cures'.

From the luxury of the rich to a darker world of poverty and disease, see how York's 19th century residents lived, learned and entertained themselves.



Delve into the delicious history of chocolate and sweets galore at our brand new chocolate experience.

Visit the new sweet shop on our Victorian cobbled street and treat yourself to some traditional sweets. Enjoy displays of original adverts, packaging and more as you immerse yourself in the stories of those who took York's life-long love of confectionery to the world.

Join us for this family-friendly, interactive experience through York's history of chocolate and sweets.



DON'T MISS!

'In Due Praise of Chocolate' with TV's Dr Annie Gray
Mon 10 July 2017, 7pm – 8pm
Find out more at www.yorkcastlemuseum.org.uk

