

FLESH OPENS 23 SEPTEMBER

A major exhibition featuring:

BACON
CHARDIN
DEGAS
LUCAS
NAUMAN
RODIN
RUBENS



Art Fund
Museum of
the Year 2016
Finalist



York Museums Trust



Circle of Rembrandt, *The Carcase of an Ox*, 1640-1645
© CSG CIC Glasgow Museums Collection.



Portrait of Henrietta Moraes on a Blue Couch, 1965 (oil on canvas),
Bacon, Francis (1909-92) / Manchester Art Gallery, UK / Bridgeman Images.
© The Estate of Francis Bacon. All rights reserved. DACS 2016.



Jen Davis, *Untitled No 26*, 2007. Courtesy of Lee Marks Fine Art, IN and ClampArt, NY

Flesh

23 September 2016 – 19 March 2017

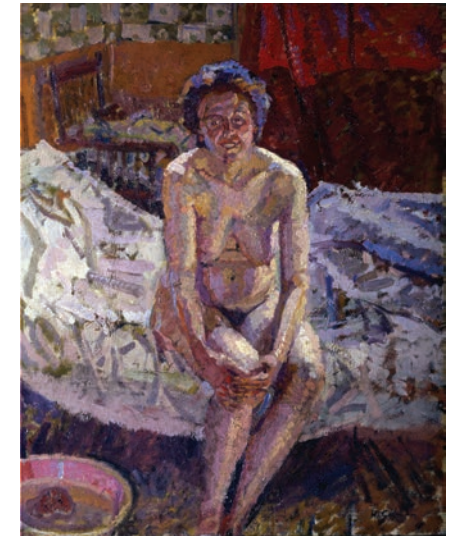
Human and animal, alive and dead, familiar and strange; this major exhibition will explore how artists represent flesh in their work.

Works by Peter Paul Rubens, Edgar Degas, Jean-Baptiste Siméon Chardin, Francis Bacon, Circle of Rembrandt and Auguste Rodin, will show how the body and flesh have long been subject to intense scrutiny by artists.

These will be contrasted with contemporary works by internationally acclaimed artists Bruce Nauman, Jenny Saville, Adriana Varejeo and Bertine de Bruyckere as well as pieces by Sarah Lucas, John Coplans and John Stezaker recently acquired by York Art Gallery through the Art Fund's RENEW scheme.

The exhibition will raise questions about the body and ageing, race and gender, touch and texture and surface and skin.

Flesh is a partnership exhibition with the University of York, curated in collaboration with Dr Jo Applin (University of York/Courtald Institute of Art).



Harold Gilman, *Interior with Nude*, 1911-12.



Art Fund_



THE UNIVERSITY of York

Centre of Ceramic Art



CoCA is a new national resource which aims to encourage greater understanding and enjoyment of British studio ceramics. Formed mainly of large gifts from significant private collections and supported by extensive archives, CoCA presents exhibitions, displays, new acquisitions and commissions.

New Display of The Anthony Shaw Collection Opening 18 November

The Anthony Shaw Collection retains its special character as a collection responsive to innovation in the field of British ceramic art. A new display of his collection of ceramics and art has been created by independent curator Tessa Peters.

In making the selection, Peters has chosen to include a number of Anthony Shaw's most recent acquisitions, from Gordon Baldwin, Kerry Jameson, Nao Matsunaga and Sara Radstone, while considering

their relationships to earlier works, both their own and with those of other significant figures such as Ewen Henderson and Gillian Lowndes.

Ceramics, paintings, sculptures, textiles and souvenirs sit together harmoniously within the domestic-style space created by Anthony Shaw and designer Martin Smith. In her display, Peters demonstrates how personal collections can continually transform our homes.



Kerry Jameson, *Peacock Banksia*, 2015.



Nao Matsunaga, *Unknown Unnatural Unreal I*, 2015.

CoCA is located in two stunning first floor galleries framed by original architectural features and flooded with natural light. The galleries showcase the most important ceramics in our collection, introducing the artists who made them and the collectors who acquired them. Containing the work of more than 600 artists, including most of those key to the founding and development of the British studio ceramics movement, CoCA highlights them in a constantly changing Hall of Fame.



A History of British Studio Ceramics

Many artists have made their mark in clay and displays in this gallery highlight some of the key personalities in our collection in a rich landscape of form, colour and texture. From familiar domestic functional pots by Bernard Leach to the challenging abstract forms of Alison Britton, artists continue to explore the malleable nature of this universal material and the intimate role it plays in our daily lives.



The Ceramic Rainbow

Our 17 metre long Wall of Pots has been transformed into a rainbow containing around 1,000 ceramics from across our collection, dating from the Roman period right through to the present day. It highlights the potter's long history of experimentation with materials and techniques as they try to create colour and texture in their work.

Manifest: 10,000 Hours Until 4 June 2017

Internationally renowned artist Clare Twomey, has created a towering installation of 10,000 ceramic bowls in response to our collection of ceramics. It reflects the dedication of the artists producing ceramics and the collectors that supported them and then generously gave their collections to York Museums Trust. Communities of helpers in York and beyond have assisted Twomey in the production of the bowls. Each bowl represents one of the 10,000 hours it is said to take to become a master craftsman.



Photograph courtesy of The Press, York

The Lumber Room: Unimagined Treasures

Curated by Mark Heard
Until 7 May 2017

The Upper North Gallery has been transformed to reflect one artist's vision of a Lumber Room – a room of miscellaneous stored objects and artefacts. For two years, York-based artist Mark Heard visited the stores of York Museums Trust researching the objects and artworks to include in the exhibition. Alongside these are new works that Mark has created especially for the show which are inspired by the collections.



Artists Garden and Edible Wood

This year we launched our Artists Garden with a new commission. 'Foundation Myths' by Charles Holland of Ordinary Architecture is inspired by the historic surroundings of the gardens whilst playfully responding to York Art Gallery's ceramics collection.

The Edible Wood is bursting with a wonderful array of trees, shrubs and herbaceous plants that all have edible parts. Look out for the many different types of Ornamental Onion (*Allium*), the Szechuan Pepper (*Zanthoxylum simulans*) and Rhubarb as well as Sea Kale, Jerusalem Artichokes, redcurrants and more. When fully mature, the garden will have an intimate atmosphere with light-filled glades and meandering paths that lead to hidden corners and unexpected flavours.



Burton Gallery

Explore Italian Old Master paintings with a religious focus, portraiture and 'vedute' (views) and Dutch and Flemish Old Master paintings which show how artists of the region specialised in landscape, lavish still life banquets and genre painting such as commonplace tavern scenes.

Works by early 20th century modern artists demonstrate the enduring influence of Impressionism and Post Impressionism, including the shared influences of Degas, Gauguin and Whistler. Abstract paintings by Michael Ginsborg and Ben Nicholson explore how artists have experimented with colour, form and texture to develop new ways of seeing.

Old favourites such as 'Hogarth's Studio' by E. M. Ward and 'Clifford's Tower' by L. S. Lowry are included, along with paintings by York artist William Etty.



William Etty, *Preparing for a Fancy Dress Ball*, 1833.

Project Gallery

The Project Gallery exhibitions showcase work with local communities and contemporary artists responding to our collections.

Teenage Art School: Art for a Garden
Until 3 December 2016

An exhibition of work produced during the gallery's four day summer Teenage Art School.

Inspired by the Artists Garden at the back of the gallery, young people have produced drawings, photographs and ceramic sculpture under the guidance of potter, Ken Jaquiere and artist-curator, Gaby Lees.

ALIVE: Art Between Life and Science
9 December 2016 – 23 April 2017

In 2015 the Centre for Chronic Diseases and Disorders (C2D2) of the University of York, with funding from the Wellcome Trust and the University, launched a series of artists in residence projects. This display explores how these artists have responded to the exciting and ground breaking research undertaken at the University of York.

C₂ Centre for Chronic
D₂ Diseases & Disorders

Supported by
wellcome trust

Adult Learning Highlights

Pick up a copy of 'Discover', our adult learning events booklet, or visit www.yorkmuseumstrust.org.uk for the full programme of events. Where booking is required, go to the 'What's On' section of the website. Usual admission applies and activities are included in admission unless otherwise stated.

REGULAR TALKS AT YORK ART GALLERY

Curator's Talks

12.30pm – 1pm

Lunchtime talks with a Gallery Curator, held on the third Wednesday of each month.

Friends of York Art Gallery Talks

12.30pm – 1pm

Visit www.friendsofyorkartgallery.co.uk for details of talks held on the second and fourth Wednesdays of the month.

Welcome Team Talks

2pm, 2.15pm, 2.30pm and 2.45pm

Join us on weekdays (except Wednesdays) and Sundays for our free 10 minute Art Shot talks.

Ceramic Art York in York Museum Gardens

9, 10 & 11 September

An exciting showcase of current ceramic art and a unique opportunity to meet the artists and buy their work. For more information see www.ceramicartyork.org.

In association with the Craft Potters Association

Sketchbook Circle

Wed: 14 Sep, 12 Oct, 9 Nov, 14 Dec, 11 Jan, 8 Feb and 8 Mar, 1.30pm – 3.30pm

A regular informal drawing group.

£5 per session, book in advance.



Art for Wellbeing

Sun: 2 Oct, 6 Nov, 4 Dec, 8 Jan, 5 Feb, 5 Mar and 2 Apr, 1.30pm – 3.30pm

Informal practical sessions for adults. This is an inclusive session, suitable for all abilities (16+ only).

No booking required.

Part of the York Museums Trust Territories programme.

LIFE DRAWING WORKSHOPS WITH YORK LEARNING

Drawing from Life - Form & Space

Sat 1 Oct, 10.30am – 3.30pm

Life drawing with artist Tim Morrison.

Painting from Life - Form & Flesh Tones

Sat 8 Oct, 10.30am – 3.30pm

How to paint flesh with artist Sue Clayton.

Each workshop: £38 per person.

Gallery admission and materials included.

Book with York Learning. Tel: 01904 552806,

email: york.learning@york.gov.uk

Workshops delivered by York Learning

WEA Life Drawing Course

Fri: 14 Oct and 21 Oct, 10am – 4pm

Work with artist Rosie Skaife d'Ingerthorpe and a life model to improve your drawing skills.

Course: £40 per person, gallery admission included.

Book online at www.enrolonline.wea.org.uk.

Course reference: C3669254

Course delivered by WEA

#YorkDRAW

There are sketchbooks throughout the gallery encouraging visitors to draw. Please tweet us photos of your drawings #YorkDRAW



SENSORY TOURS

The Lumber Room

Sun 16 Oct, 12.30pm – 1.15pm

Hear the story behind Mark Heard's exhibition.

Ceramics

Wed 7 Dec, 12.30pm – 1.15pm

Discover the CoCA displays through touch and description.

Flesh

Sun 19 Mar 2017, 12.30pm – 1.15pm

Explore how artists have been inspired by the human body.



Everyone over 16 welcome, but especially suitable for partially-sighted or blind adults.

Book in advance.

The Annual CoCA Lecture: with Christie Brown

Sat 12 Nov, 4pm – 5pm

'Casting About: Re-searching through practice'. In the Tempest Anderson Hall at the Yorkshire Museum.

£8 per person, book in advance.

In association with the Friends of York Art Gallery and the Northern Potters Association

Flesh Poetic Sketchbook

Fri: 20 Jan, 3 Feb and 17 Feb, 1pm – 4pm

A course of three workshops led by poet Robert Powell including a session of drawing activities with artist Jake Attree.

Course: £50 per person, includes the opportunity to take part in 'An Early Evening of Poetry' on Sat 18 Mar or entry to the event. Book in advance.

Residents' Festival – Studio Drop-in

Sat 28 Jan and Sun 29 Jan, 11am – 1pm and 2pm – 4pm

The Studio will be open for all to take part in practical drawing activities. Entrance to the gallery is FREE to York residents with a valid York Card during Residents' Festival.

No booking required.

Naked Acts

Tue 31 Jan, 10am – 5pm

Dr. Nina Kane, performance artist, life model and queer activist, explores the *Flesh* exhibition and its themes. Come and develop your own creative response using the gallery and Studio spaces in this dynamic and inspiring model-led process.

£25 per person, gallery admission and materials included. Book in advance.

ART WORKSHOPS WITH YORK LEARNING

Colour Mixing and Playful Mono Printing

Sat 11 Feb, 10.30am – 3.30pm

Join artist Sudeshna Chattopadhyay and explore this expressive technique.

Playful Portraits – Style and Character

Sat 11 Mar, 10.30am – 3.30pm

Artist Sudeshna Chattopadhyay looks at different approaches to portraiture.

Each workshop: £38 per person.

Gallery admission and materials included.

Book with York Learning. Tel: 01904 552806,

email: york.learning@york.gov.uk

Workshops delivered by York Learning



Flesh performances

Wed 15 Feb

Claire Hind with the Drama and MA Theatre and Performance students from York St John University will be curating a performance programme throughout the day, including a performance by internationally acclaimed artist Martin O'Brien.

No booking required.

In association with York St John University

A DAY OF POETRY

Sat 18 Mar

10.30am – 12.30pm: Poetry Writing Masterclass with Christy Ducker.

2pm – 4pm: Poetry Writing Masterclass with Andrew McMillan.

6pm – 7pm: Flesh: An Early Evening of Poetry with Christy Ducker, Andrew McMillan, Robert Powell and Flesh Poetic Sketchbook attendees.

Each workshop: £15, workshop charges include evening event. Evening event only: £5. Book in advance.

Part of the York Literature Festival

YMT Book Club

The Improbability of Love by Hannah Rothschild

Sat 25 Mar, 3pm – 4.30pm

Join the 'book club with a difference' to discuss this book about love, art attribution and the curious world of the great auction houses. Includes a tour highlighting art by unknown artists.

Book in advance.

Part of the York Literature Festival

COMING SOON

Salt Glazing and Toby Jugs – Potter's Masterclass with Peter Meanley and Lars Tharp
Sat 8 Apr, 10.30am – 4pm

Join renowned potter Peter Meanley and expert Lars Tharp for a morning of object handling at York Art Gallery and an afternoon of practical demonstrations at York College.

£120 per person, gallery admission, materials and lunch included. Book in advance.

In association with York College



Family Learning Highlights

There are toys, games, books and drawing materials throughout the gallery for families to enjoy every day.

We open the Studio for drop-in activities during most York school holiday periods. Please check the gallery's website for more information. Activities are included in admission and there is no need to book.

MUSEUM MONKEYS

Fun sessions for Early Years inspired by the art on display. Sessions are £4 per child. Please book via the website. If you are unable to attend please cancel your booking to allow others to participate.

Museum Baby (for ages 0 – 2)

Fri: 4 Nov, 11 Nov, 18 Nov, 25 Nov and 2 Dec

Early Years Explorers (for ages 2 – 5)

Thu: 12 Jan, 19 Jan, 26 Jan, 2 Feb and 9 Feb



Visitor Information

Information desks are located on the ground floor at the Exhibition Square entrance and on the first floor at the CoCA shop entrance. The Welcome Team is happy to help with any questions you may have.

SHOPPING

York Art Gallery shops stock a great range of cards, books, postcards, gifts, and a fantastic children's range. The CoCA shop on the first floor provides a selection of our exclusive ceramic products and gift ideas including ceramics by practicing potters. You are welcome to visit the shops at any time.

CAFÉ

Relax and unwind in our café. No8 at York Art Gallery offers good value, locally-sourced ingredients, a creative fusion of world flavours and traditional classics – salads, sandwiches, excellent coffee and home-baked cakes. Children's meals available. We also cater for most dietary requirements, just ask one of the team.

TOURS AND TALKS

We have daily ArtShot talks that start at 2pm every day except Wednesdays and Saturdays. These are four 10 minute talks – attend all four or listen to just one or two. These are free and are provided by our Welcome Team, no need to book.

Our programme of events includes around 4 Sensory Tours for adults each year. These are particularly suitable for the blind and partially sighted but everyone over 16 is welcome. Booking essential. See York Art Gallery's website for details.

SCHOOLS, GROUPS AND LEARNING

York Art Gallery welcomes groups of all ages and offers a variety of talks and workshops.

You will find details of practical school workshops for primary schools and a range of downloadable resources on the learning pages of our website.

FACILITIES

Toilets are available on both floors.

Baby changing facilities are available and York Art Gallery is a breastfeeding friendly venue.

Lockers are available and free to use. They are located in the first floor lift lobby area. A £1 coin deposit is required to use the lockers.

Seating is available in the galleries. Portable folding stools are available on request.

ACCESSIBILITY

There are two lifts located in the main entrance and one at the garden entrance. The lift provides access to all levels.

A wheelchair is available for public use.

Mobility scooters are permitted. We ask that drivers take care when driving through the gallery spaces.

Cars can drop off at the main entrance of the gallery. The nearest car parks are Marygate and Bootham Row. Blue badge holders can park at Bootham Row for free all day.

Guide dogs and hearing dogs are welcome.

Where possible, we produce subtitles to our audio visual interpretation.

There is additional descriptive information available for key artworks on display around the gallery.

Discover more at yorkartgallery.org.uk

Visitor Information

OPENING TIMES

23 September onwards

Mon to Sun: 10am – 5pm

Last admission: 4.30pm

Closed 25, 26 December and 1 January.

Early closing: 2.30pm on 24 and 31 December.

ARE YOU A YORK RESIDENT? Valid YorkCard holders each receive **20% discount** on admission!

ADMISSION

YMT Card Holder **FREE**

Adult (with 10% Gift Aid Donation) **£7.50**

Adult (without donation) **£6.81**

Child (16 and under)* **FREE** with a paying adult

Access Day Ticket** **£4.00**

National Art Pass **FREE**

Buy your National Art Pass at www.artfund.org

YMT Card

12 months unlimited access to **York Castle Museum, York Art Gallery** and the **Yorkshire Museum**.

YMT Card **£22 / £20** with Direct Debit

York Residents*** **£11 / £10** with Direct Debit

Access YMT Card** **£11 / £10** with Direct Debit

York Residents*** **FREE** subject to availability

GIFT AID IT!

York Museums Trust is an independent charity. UK Tax Payers may 'Gift Aid' their admission and enable York Museums Trust to reclaim tax back on the whole of the admission paid. For York Museums Trust, your 'Gift Aid' donation is currently worth an extra 25p for every pound.

HOW TO FIND US

York Art Gallery is located in Exhibition Square, five minutes from York Minster. It is about 15 minutes walk from York Railway Station.

PARKING

The nearest car park is Marygate, which is five minutes walk from York Art Gallery.

SUPPORT US

York Museums Trust is an independent charity. A donation gift of any size has a great impact upon the development of the Trust. To make a donation or to find out more about York Art Gallery, York Museums Trust and how your support could help, please visit www.yorkmuseumstrust.org.uk.

CONTACT US

York Art Gallery, Exhibition Square, York YO1 7EW

Tel: 01904 687687

Email: art.gallery@ymt.org.uk

Web: yorkartgallery.org.uk

Twitter: @YorkArtGallery @YAGWelcomeTeam

Discover more at yorkartgallery.org.uk

York Museums Trust



Supported using public funding by
**ARTS COUNCIL
ENGLAND**



Supported using public funding by
**ARTS COUNCIL
ENGLAND**



Friends of York Art Gallery

TERMS & CONDITIONS

* Offer does not apply to organised groups. Maximum 4 children per adult. Additional children will be charged at £4 per child.

** Access Tickets: available to 17-24 year olds and those on most forms of benefit. Terms and conditions apply, for more information see www.yorkartgallery.org.uk.

*** With a valid YorkCard, current council tax bill or valid York Student ID.

Information correct at time of print. York Art Gallery is part of York Museums Trust, charity number 1092466.

Front cover image: *A Study of a Girl's Head*, by Hilaire-Germain-Edgar Degas Scottish National Gallery. Presented by Sir Alexander Maitland in memory of his wife Rosalind, 1960 – 2.