

SPECIAL EXHIBITION

1914

When The
WORLD CHANGED
FOREVER

1914: When the World Changed Forever takes you from the recruiting office to the horrors of the front line through the objects and stories of those who experienced the First World War.

Witness the peace shattered by the outbreak of war and learn of the dangers, hardships and camaraderie of life in the trenches.

From battles in the air and at sea to the struggles on the Home Front, follow real Yorkshire men and women through the war, discover the objects that accompanied them and hear their unique stories.

COMING SOON – NEW DISPLAY
100 YEARS SINCE THE BATTLE OF THE SOMME
24 June – 18 September 2016
find out more at www.yorkcastlemuseum.org.uk

Supported by
The National Lottery
through the Heritage Lottery Fund



TOY STORIES

Whether you're seven or 70, you'll find your best-loved childhood toys here... and your parents' and grandparents' favourites too.

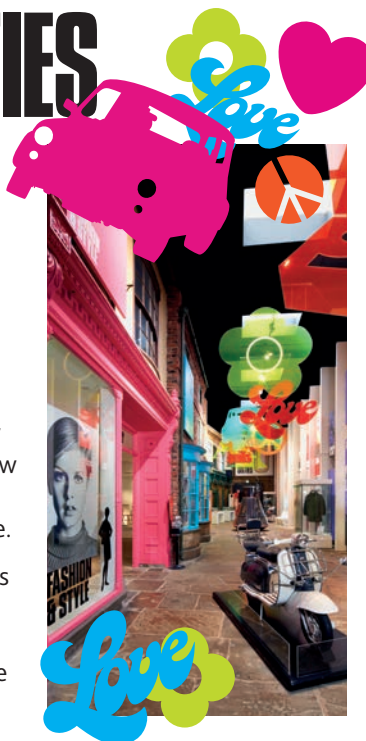
Share your memories of dolls and Lego, see our 100 year-old carousel and have a go at Pong. Follow the teddy bear trail to solve a puzzle or play together in our fun castle-inspired play area.

THE SIXTIES

Take a trip back to the decade that transformed our lives and attitudes with our colourful interactive gallery.

Remember Beatlemania, squeeze into the Mercury space capsule and see how new inventions and ideas transformed everyday life.

From flamboyant fashions and revolutionary music to space-age technology, things would never be the same again.



YORK CASTLE PRISON

The museum buildings were once a Georgian prison, and down in the felons' cells lies a dark and brutal history – a time of rogues, thieves and murderers.

Visit our infamous residents and shiver at their stories of rough conditions, crooked justice and harsh punishments. And watch out for our most notorious inmate of all – the legendary highwayman, Dick Turpin!



SHAPING THE BODY

400 YEARS OF
FASHION, FOOD & LIFE

A major new exhibition looking at how body shape has changed over the past 400 years through fashion, food and lifestyle.

NEW Exhibition
Opens 25.03.16

Visitor Information

OPENING TIMES

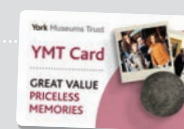
Open Daily: 9.30am – 5pm
Closed 25, 26 Dec and 1 Jan. Early closing 24 and 31 Dec, see website for details.

ADMISSION

YMT Card Holder	FREE
Adult (with 10% Gift Aid Donation)	£10.00
Adult (without donation)	£9.09
Child (16 and under) *	FREE with a paying adult
Access Day Ticket **	£5.00

YMT Card

12 months unlimited access to
York Castle Museum, York Art Gallery
and the Yorkshire Museum.



YMT Card	£22 / £20 with Direct Debit with a YorkCard
Access YMT Card **	£11 / £10 with Direct Debit with a YorkCard

HOW TO FIND US

York Castle Museum is opposite Clifford's Tower. Follow the green pedestrian signs to Castle Area.

York Castle Museum, Castle Area, Eye of York, York YO1 9RY
T: 01904 687687 E: castle.museum@ymt.org.uk

Find us on Facebook
York Castle Museum

Follow us on Twitter
@YorkCastle

Café Enjoy stunning views of Clifford's Tower. The perfect stop-off point on your visit for full meals or light snacks.

Pushchairs Pushchairs cannot be taken into galleries. A 'buggy park' and a choice of baby carriers are available free of charge.

Access The museum is accessible to wheelchair users except for the upper floors of the historic buildings. For further details, please phone or visit the website. Some areas may also be difficult for people with visual impairment. Please note our 1914 galleries are fully wheelchair accessible.

Shop A great selection of gifts, books, and souvenirs for all ages, including First World War, Sixties and fashion-themed items.

www.yorkcastlemuseum.org.uk

Supported using public funding by
ARTS COUNCIL ENGLAND

CITY OF YORK COUNCIL

*Kids go FREE – children 16 and under go free with a paying adult; maximum 4 children per adult. Offer does not apply to organised groups.

**Access Tickets: available to 17-24 year olds and those on most forms of benefit. Terms and conditions apply, for more information see www.yorkcastlemuseum.org.uk

York Castle Museum is part of York Museums Trust. Charity number 1092466. Information correct at time of going to print.

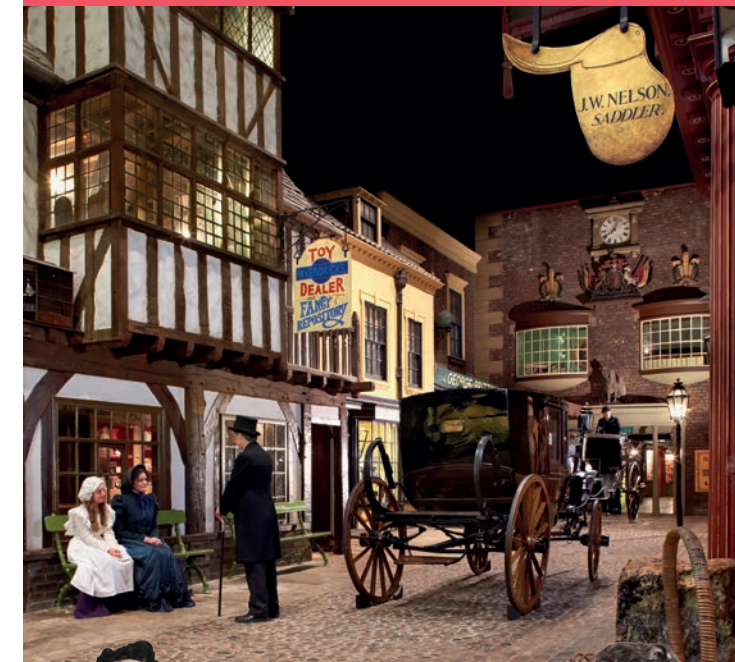
York Castle Museum

Kids Go
FREE
in 2016*

THE BEST DAY OUT IN HISTORY

SHAPING THE BODY

NEW Exhibition Opens 25.03.16



SHAPING THE BODY

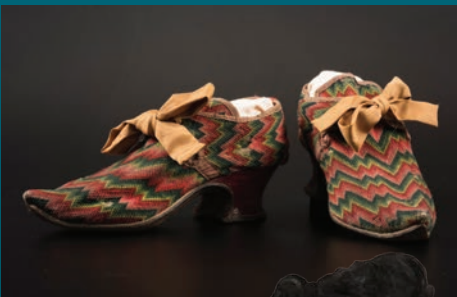
400 YEARS OF
FASHION, FOOD & LIFE

NEW Exhibition

York Museums Trust



NEW Exhibition
Opens 25.03.16



“THE CLOSEST THING TO A TIME-TUNNEL EXPERIENCE” RICK STEVE'S GREAT BRITAIN



York Castle Museum invites you to step straight into years gone by...

Wander through **VICTORIAN STREETS**, be reunited with your **FAVOURITE CHILDHOOD TOYS**, experience life in a **FIRST WORLD WAR TRENCH** and then venture into the actual **PRISON CELLS** that once held notorious highwayman **DICK TURPIN**.

Whatever your age and wherever you come from, history comes to life at **York Castle Museum**.

TRAVEL BACK IN TIME...

Take a journey of discovery to our world-famous recreated Victorian street, Kirkgate.

Soak up the sights, sounds, and smells of Victorian York as you explore its cobbled streets and alleyways. Visit shops packed with fascinating objects – from luxurious costumes to traditional sweets and the pharmacist's unlikely 'cures'.

From the luxury of the rich to a darker world of poverty and disease, see how York's 19th century residents lived, learned and entertained themselves.



Image: © Prior Attire & Tinseltight Photographics.



SHAPING THE BODY

400 YEARS OF FASHION, FOOD & LIFE

From 18th century bum rolls, through to the Victorian hour glass figure, the punks of the Seventies and the perms of the Eighties, see how our bodies have been shaped and designed through the choices we make and the consequences of our lifestyles.

Meet the people who have pushed their bodies to the limits to gain the look they crave and find out about dangerous fashions such as the women who wore extra tight corsets, high heels and even poisonous dresses!

Department for Culture Media & Sport THE WOLFSON FOUNDATION DCMS/Wolfson Museums & Galleries Improvement Fund

THIS THOUGHT-PROVOKING EXHIBITION CHALLENGES THE NOTION OF THE PERFECT BODY